

Lucile-Morgane Hays & Adeline Kerner\*

UMR 7207 – Centre de Recherche en Paléontologie - Paris CNRS – Sorbonne Université - MNHN, Paris, France

\*Corresponding author: Adeline Kerner ([kerner@mnhn.fr](mailto:kerner@mnhn.fr))

<https://doi.org/10.3897/biss.4.59106>

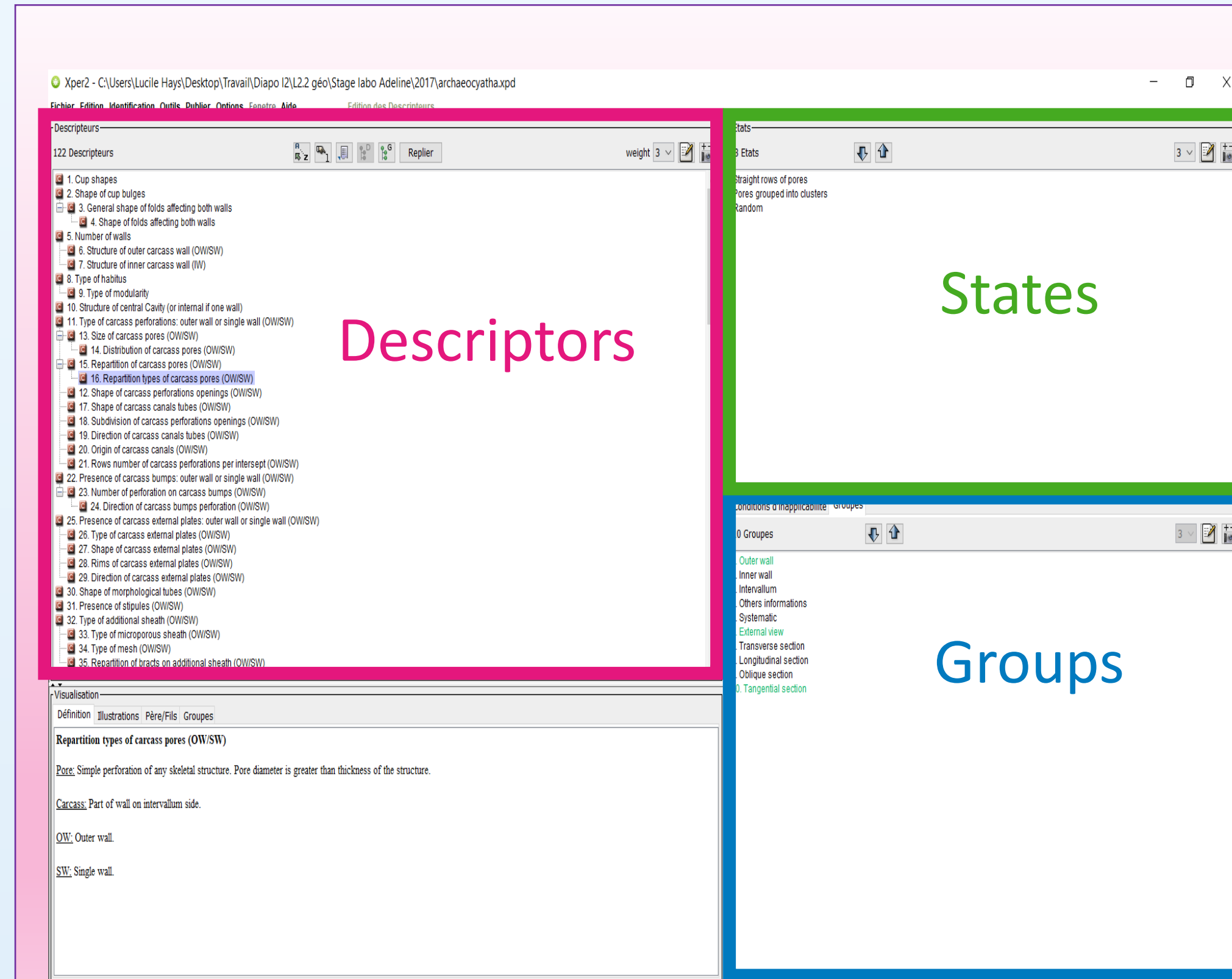
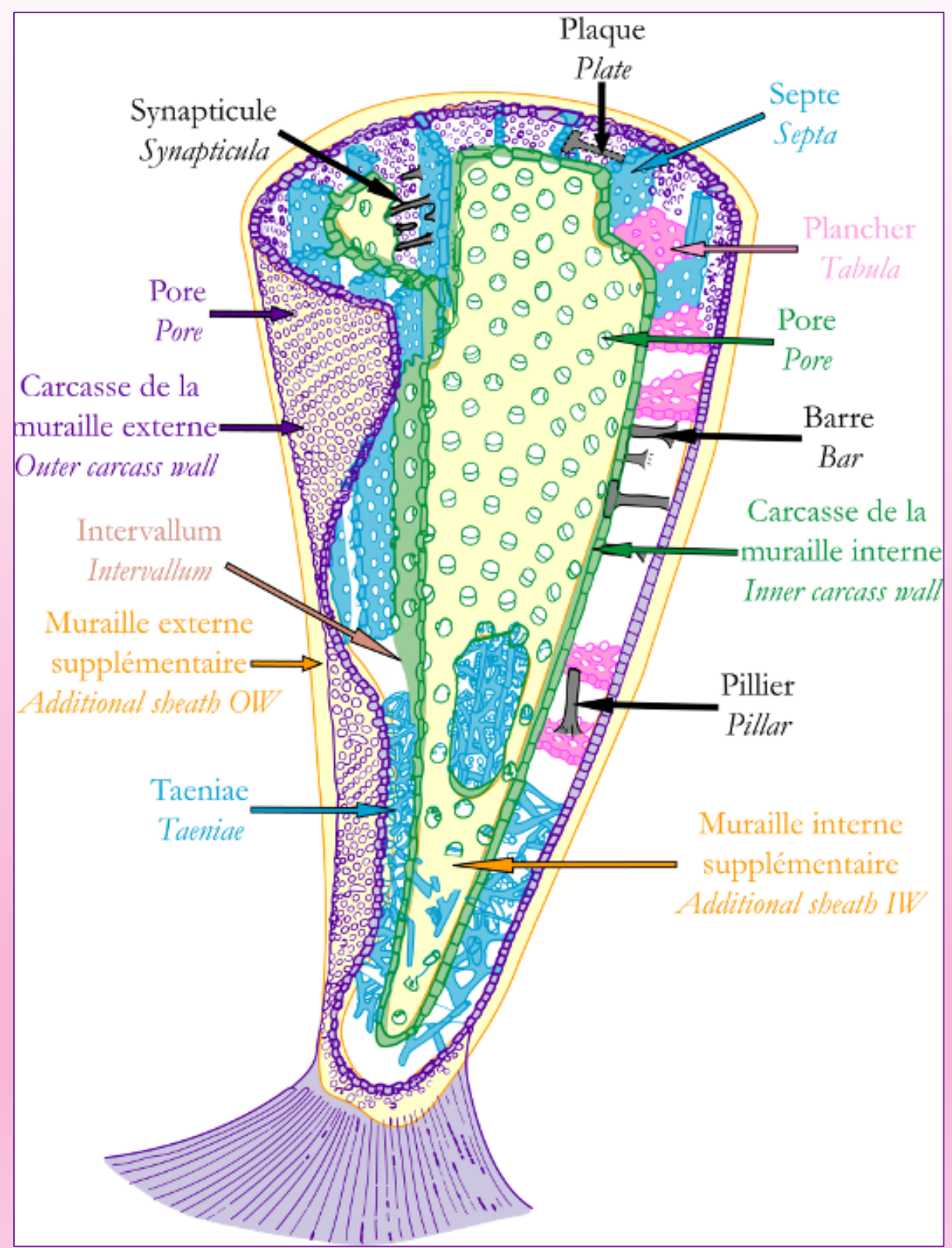
## Archaeocyatha

- 1<sup>st</sup> animal reef-builder
- Oldest calcified-sponges
- Exclusively Cambrian fossils

## Schematic morphology

- 2 walls,
- 1 intervallum with vertical elements, horizontal elements, links between intervallar elements

See: <http://archaeocyatha.infosyslab.fr>



## Xper 2 & 3

- Manage descriptive data
- contains a descriptive model and the description of the taxa (here 309 genera of archaeocyaths)
- descriptors organized in groups.
- provides interactive identification keys

See: <http://xper3.com>

## Annotate (RECOLNAT(ANR-11-INBS-0004))

image annotation tool for the natural science to perform physical and identification measurements

used version: 1.5.44, Windows 64 bits, download: <https://www.recolnat.org/fr/annotate>

**Recolnat:** Program whose goal is to create an image bank with french collections of natural science and collaborative tools for its exploitation

**Annotate library**

Import images

Images folders

List of photos with collection number

Metadata and annotations

Models

Creation of a measurements model

Import the descriptive model from Xper (controlled vocabulary list)

**Annotate measurement window**

List of measurements and annotations:  
Appear in chronological order.  
Need to be able to sort and organize them.

Annotations of observed anatomical structures: visible and easy to use

Length tool: visible and easy to use

photo

Surface tool: useful but not very accurate. Fixed image during the surface delineation.

Count tool: easy to count but invisible

Angle tool: visible and easy to use

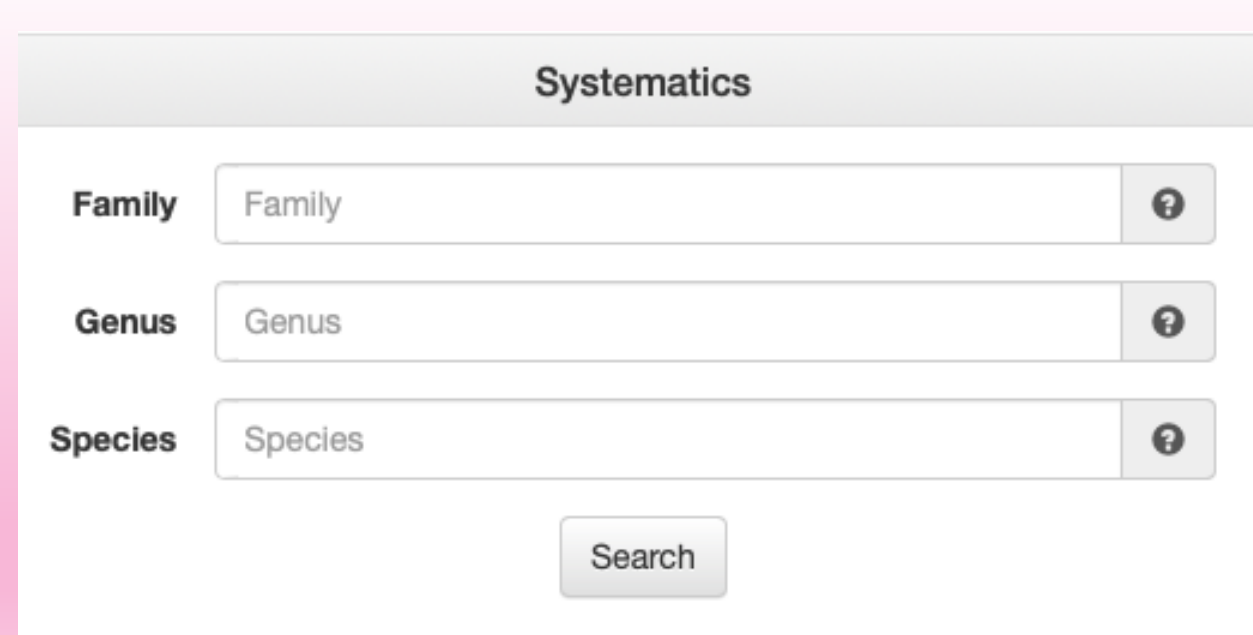
## To be improved

- **Photo contrast:** Need to be able to play with sharpness to simulate a change in microscope focus.
- **Import of photos:** If several photos of the same specimen are imported, the import does not work.
- **Updating the work plan:** Annotate's memory is quickly saturated, needing to close the software to update the desktop.
- **Export to Xper:** This feature is only available on the mac version.

## Configuration of the search fields:

Not directly linked to Annotate. Recolnat's search criteria not suitable for us. Need to search by Class or Order.

See: <https://explore.recolnat.org>



## Problem with descriptive groups:

Annotate duplicates the descriptors present in several groups under Xper which makes the model redundant.

Building of tabulae	Longitudinal section(18)
Building of tabulae	Oblique section(19)
Chambers number	Others informations(14)
Chambers number	External view(16)
Chambers number	Longitudinal section(18)
Chambers number	Oblique section(19)

## Conclusion

Annotate has great potential as it can assist researchers in their work and proposes an alternative to the need to travel around the world to study a fossil.