

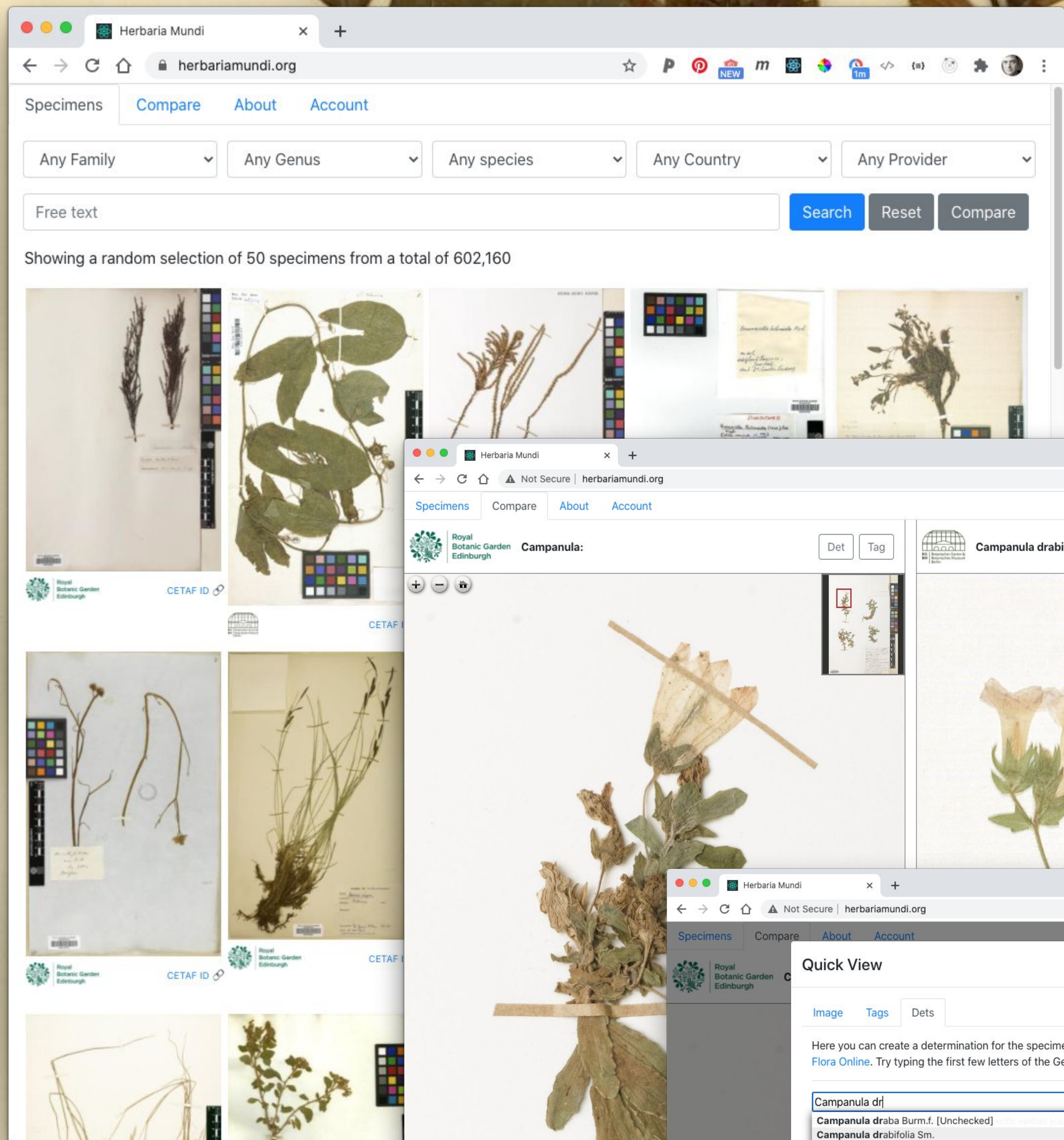


Herbaria Mundi

An image centric approach to manipulation of specimens from multiple collections

Browse and search across Multiple institutions

Roger Hyam
Royal Botanic Garden Edinburgh
rhyam@rbge.org.uk



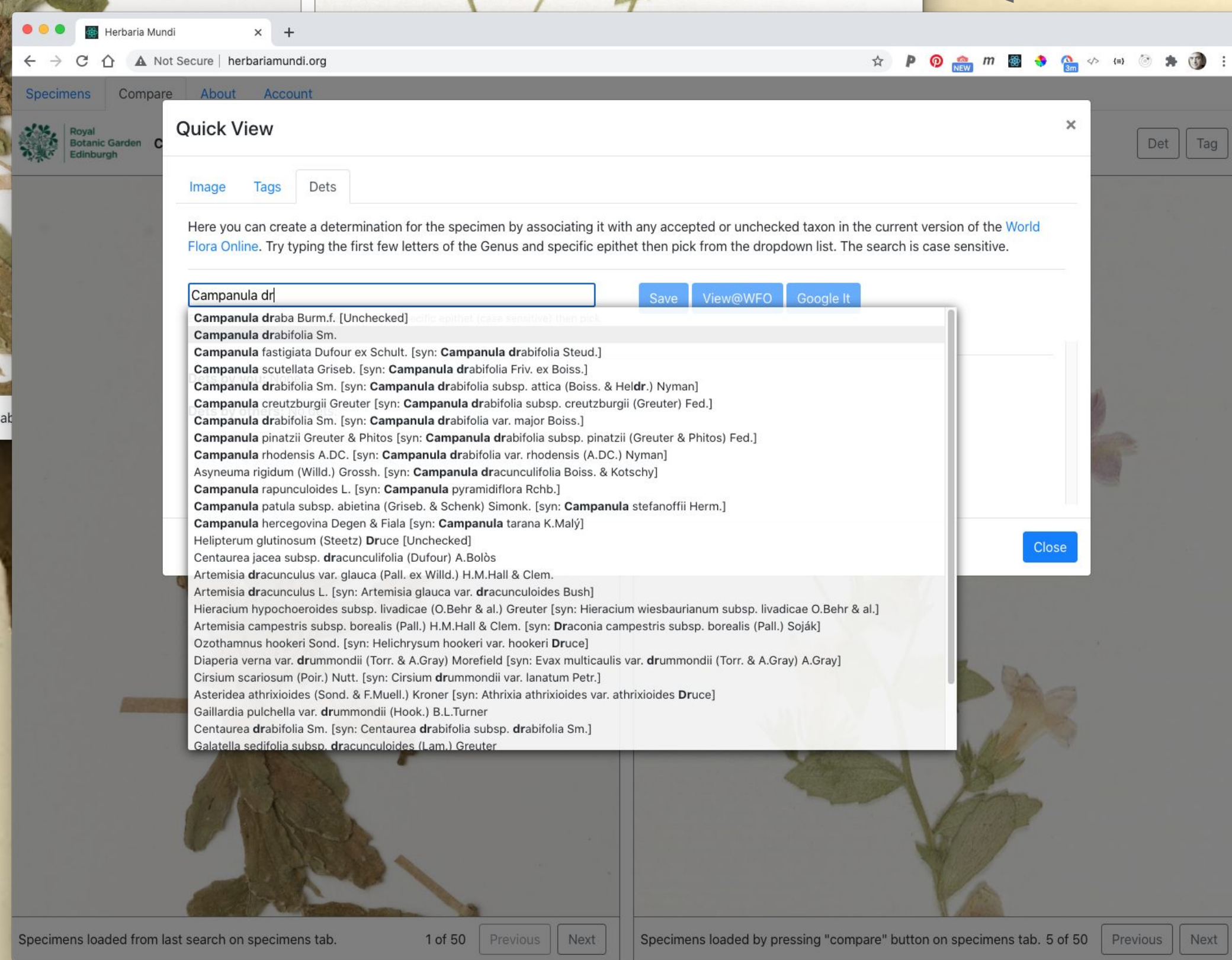
Compare zoomable images side by side no matter where they are located.

For herbarium curators Herbaria Mundi offers the "Holy Trinity" of reporting:

- Which specimen was used
- Who used it.
- What did they do with it:
 - Determinations
 - Tags
 - Annotations



Add dets to specimens no matter where they are stored.



Herbaria Mundi

- A demonstration of the power of institutions adopting the International Image Interoperability Framework (IIIF).
- Specimens from more than one institution can be interacted with **as if** they are in one location.
- Herbaria Mundi is a 100% image led way of working with specimens.
- The herbarium currently contains 600k specimens.
- You can login and try it **NOW** using your ORCID
 - Browse
 - Compare
 - Det
 - Tag
 - Download your work
- What more would you like it to do?
 - Measurement?
 - Transliteration?
 - Georeference?
 - Duplicate collections?
- Talk to me about how you get your specimens accessible through IIIF.
- Have a play today!
- Roger Hyam rhyam@rbge.org.uk

Syringa tomentella Bureau & Franch.
is the accepted name for
Syringa wilsonii C. K. Schneid.
according to
Flora of China 15: 283 (1996)

Go here to try it out.



Read the abstract

<https://www.herbariamundi.org/>



SCAN ME

EXPEDITION TO CHINA, 1907-09.
Western Szechuan.

Syringa wilsonii Schneid.

Alt.

1/108 + 10/08.